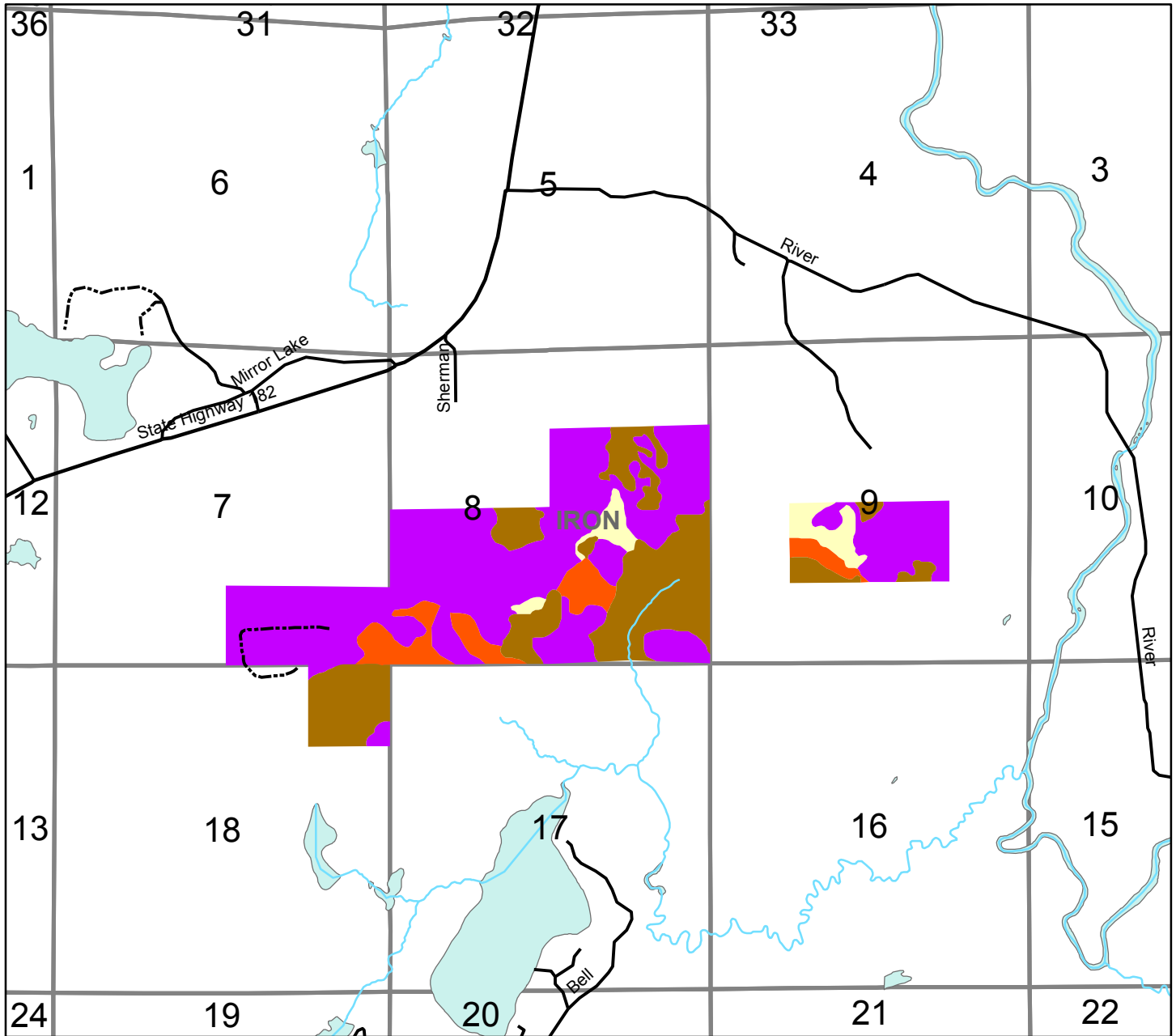



# Lapointe, LLC. Ownership Map of Southeast Iron County Cover Groups. T41N R4E, Sherman, Wisconsin 3/17/2016



 - Upland Mix Cover Group ( Hard Maple, Red Pine, White Pine, Red Oak with other secondary species).

 - Aspen Cover Group ( Dominated by Aspen with Maple and Oak with a variety of secondary species).

 - Swamp Conifer Cover Group ( Cedar, Hemlock and Spruce with a variety of secondary species).

 - Non-Timber Cover Group ( tag alder, open marsh, water dominated).